

# POWERFLEX®

## PART NUMBER

# PFR85-828

## DESCRIPTION

## REAR SUBFRAME REAR MOUNTING BUSH

## INSTALLATION GUIDE

### Contents (parts per pack):

- 2 x Polyurethane A Bushes
- 2 x Polyurethane B Bushes
- 2 x Stainless Steel Sleeves
- 2 x Zinc Plated Mild Steel Washers

Please read the complete fitting instructions and check package components before fitment. These fitting instructions are to be used as a guide and in conjunction with workshop manual.

It is recommended that:

- all work to be carried out by a licensed technician;
- all safety precautions adhered to;
- wheel alignment to be checked and adjusted as required after any suspension work.
- All fasteners must be tensioned to manufacturer's torque settings.

### Fitting Instructions:

1. Loosen and remove the rear subframe mounting bolts to allow the rear subframe to drop down away from the car. The rear shock top mounts, trailing arm mountings and driveshaft may also need to be unfastened or removed to allow the subframe to come free. Powerflex recommends using a workshop lift during this fitting process.

**N.B.: The mounting bolts are single-use 'stretch bolts' from factory. Powerflex recommends replacing with every removal.**

2. Pry off and remove the lower shaped washers from the OEM mounting bushes.
3. Using appropriate pressing tools, push the OEM bushes out of the subframe. There is a plastic flange on the OEM bushes, that can be snapped off to leave a clean bore for pressing on both ends.
4. Push the Polyurethane bushes into either end of the bore on the subframe, with the A part (marked "UPPER") at the top, and the B part (marked "LOWER") at the bottom. See Figure 1.
5. Push the Stainless steel sleeve through the bore of the bushes until flush with the bush faces.
6. Lift subframe back up to car body, and place the gold-coloured mild steel washers on the lower face of the polyurethane bushes. Slide new bolt up through washer and bush and fasten subframe to car body, using factory tightening specifications.
7. Refit all other components and perform a 4-wheel alignment.

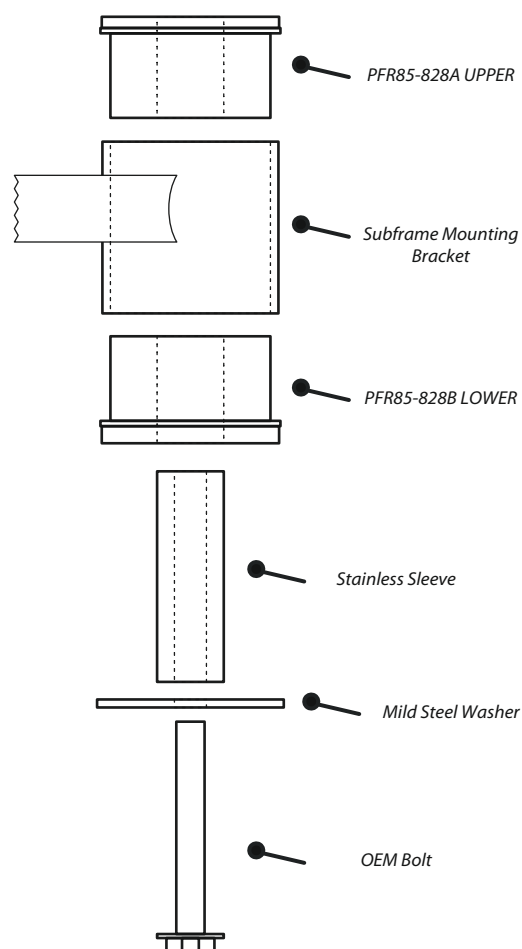


Figure 1