

POWERFLEX®

PART NUMBER

PFR68-230

DESCRIPTION

REAR BEAM MOUNTING BUSH

INSTALLATION GUIDE

Contents (parts per pack):

1 x PFR68-230 Bush 1 x PTFE/Silicone Grease
1 x Stainless Steel Sleeve 2 x Stainless Steel Washers

Please read the complete fitting instructions and check package components before fitment. These fitting instructions are to be used as a guide and in conjunction with workshop manual.

It is recommended that:

- all work to be carried out by a licensed technician;
- all safety precautions adhered to;
- wheel alignment to be checked and adjusted as required after any suspension work.
- All fasteners must be tensioned to manufacturer's torque settings.



Fitting Instructions:

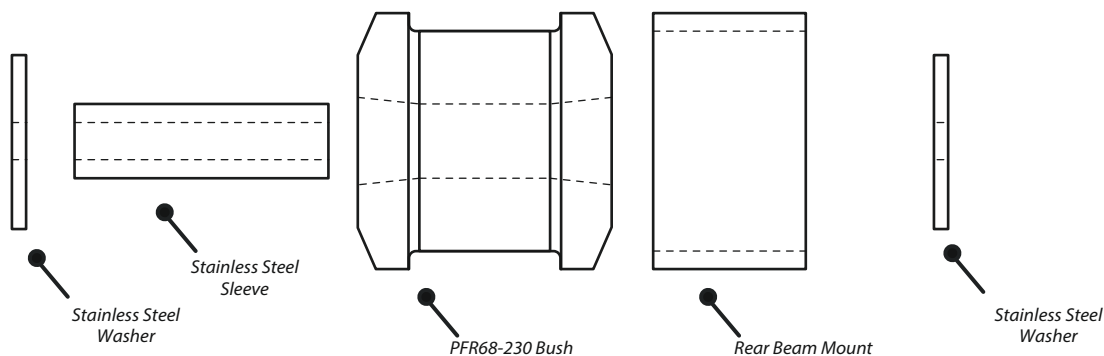


Figure 1

1. Remove the original bush and clean away any dirt and corrosion.
2. File away any sharp edges using a rounded file.
3. Using a vice or workshop press, insert the PFR68-230 bush into the vacant hole, until it sits flush within the bore.

Tip: use washing up liquid to lubricate the vacant hole and press the bush in at an angle, to aid insertion.

4. Apply some of the supplied grease to the bore of the Bush and insert the Sleeve, until it sits flush within the bore.
5. Place one washer on each end face of the Bush and refit the mount, ensuring to tension all hardware to manufacturers recommended torque settings.