



PART NUMBER

**PFR5-526**

DESCRIPTION

**REAR DIFF REAR MOUNTING BUSH**

### INSTALLATION GUIDE

#### **Contents (parts per pack):**

- 2 x Polyurethane bush
- 2 x Stainless steel sleeves
- 2 x Zinc plated steel washers
- 1 x Grease



*Please read the complete fitting instructions and check package components before fitment. These fitting instructions are to be used as a guide and in conjunction with workshop manual.*

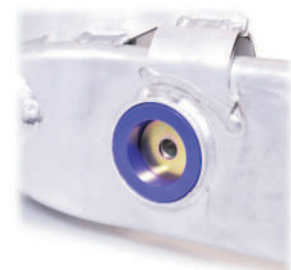
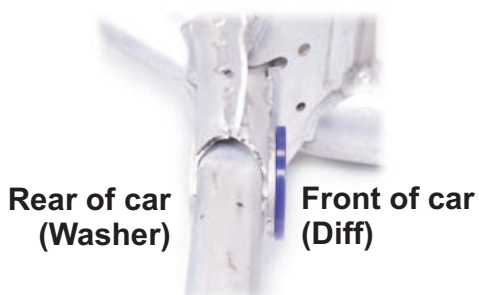
*It is recommended that:*

- all work to be carried out by a licensed technician;
- all safety precautions adhered to;
- wheel alignment to be checked and adjusted as required after any suspension work.

*All fasteners must be tensioned to manufacturer's torque settings.*

#### **Fitting Instructions:**

1. Remove rear diff mounting bolts and lower the diff to allow access to the bushes. Remove the original rubber bushes from the sub-frame. Clean any dirt or corrosion from the bores in the sub-frame and the mounting face of the diff. Remove any sharp edges using a file.
2. Insert the new polyurethane bushes into the sub-frame with the largest diameter facing forwards, towards the front of the car. The diff sits against this face of the bush.
3. Apply some of the supplied grease to the bore and both ends of the bush and insert the sleeve.
4. Raise the diff back into position, refit the original bolt using the supplied washer facing the rear of the car, tighten to manufacturers recommended torque settings.



**Washer goes here  
(Rear of car)**