

# POWERFLEX®

## PART NUMBER

# PFR5-4611

## DESCRIPTION

## REAR SUBFRAME REAR BUSH

## INSTALLATION GUIDE

### Contents (parts per pack):

2 x Polyurethane A Bushes    1 x PTFE/Silicone Grease  
2 x Polyurethane B Bushes    2 x Stainless Steel Sleeves

*Please read the complete fitting instructions and check package components before fitment. These fitting instructions are to be used as a guide and in conjunction with workshop manual.*

*It is recommended that:*

- all work to be carried out by a licensed technician;*
- all safety precautions adhered to;*
- wheel alignment to be checked and adjusted as required after any suspension work.*
- All fasteners must be tensioned to manufacturer's torque settings.*

### Fitting Instructions:

1. Remove the original rubber bush from the rear subframe rear position.
2. Clean any dirt and corrosion from the bore of the subframe and file off any sharp edges.
3. Fit the upper polyurethane part A into the subframe from the upper chassis side.
4. Fit the lower polyurethane part B into the subframe from the lower road side (identified by a recess in the middle of the lower face).
5. Apply the supplied grease into the bore of the polyurethane bush and the upper and lower faces of the bush.
6. Insert the stainless steel sleeve into the polyurethane bush so that it sits flush.
7. Refit the subframe back to the vehicle, using the original bolt and washer and tension all hardware to manufacturers recommended torque settings.

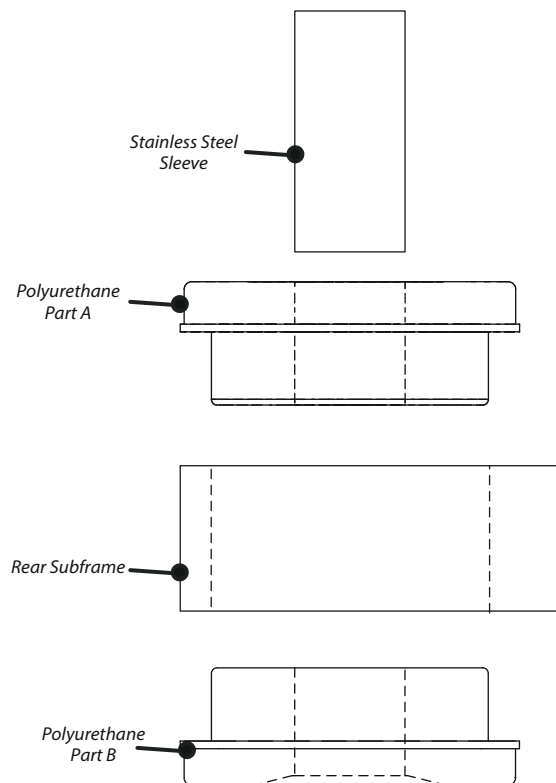


Figure 1



Figure 2