

POWERFLEX®

PART NUMBER

PFR5-3606

DESCRIPTION

REAR SUBFRAME REAR MOUNTING BUSH

INSTALLATION GUIDE

Contents (parts per pack):

- 2 x A bushes
- 2 x B bushes
- 2 x stainless steel sleeves
- 1 x grease

Please read the complete fitting instructions and check package components before fitment. These fitting instructions are to be used as a guide and in conjunction with workshop manual.

It is recommended that:

- all work to be carried out by a licensed technician;
- all safety precautions adhered to;
- wheel alignment to be checked and adjusted as required after any suspension work.

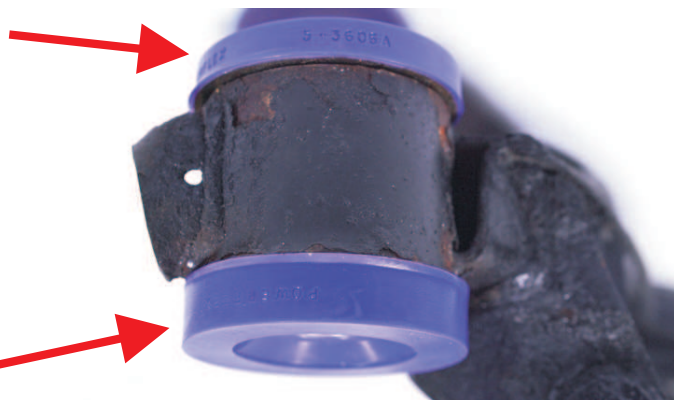
All fasteners must be tensioned to manufacturer's torque settings.



Fitting Instructions:

1. Remove the original bushes from the subframe. Clean any dirt and rust from the bore of the subframe and end faces.
2. Fit the A bush in from the top side.
3. Push the B bush into the subframe from the under side. This has a recess in the bush to accept the original lower washer.
4. Apply some of the supplied grease to the bore of the bushes and insert the sleeve.
5. Raise the subframe back into position, re use the original lower washer and nut, bolt the subframe back up using the manufactures torque settings.

A bush upper



**B bush lower
with recess for washer**