



FITTING INSTRUCTIONS FOR PFF17-201, 207, 207W, 208, 209

Remove the old bushes from the front and rear upper and lower wishbones including the original outer sleeve. These parts can be pressed out with difficulty and it is easier to burn out the rubber and cut through the original outer sleeve.

Be sure to clean all traces of burnt rubber and clean the inside surface of the wishbone. The original outer sleeve can then be cut away.



PFF17-201 – front upper and lower wishbone bushes installed. Ensure top-hat part of bush is installed towards the centre of the wishbone.



PFR17-207W fitted in the same way as PFF17-201 with top-hat section installed towards centre of wishbone. Note washer locations.

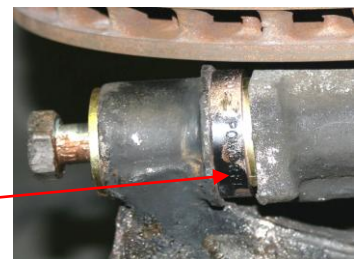


PFR17-208 fitted with larger top-hat section towards centre of wishbone.



PFR17-209 fitted similar to PFF17-201. It is important to retain the original heatshield and re-apply it after fitting the POWERFLEX bush. If the original heatshield is no longer present, ensure a replacement heatshield is fitted. Note washer locations.

Retained original heat shield applied here



Visit www.powerflex.co.uk for more detail on fitting POWERFLEX bushes.