

# POWERFLEX®

## PART NUMBER

# PFR16-515

## DESCRIPTION

# REAR SHOCK ABSORBER TOP MOUNTING BUSH

## INSTALLATION GUIDE

### Contents (parts per pack):

4 x Polyurethane Bushes      1 x PTFE/Silicone Grease  
2 x Stainless Steel Sleeves    4 x Zinc Plated Mild Steel Washers

Please read the complete fitting instructions and check package components before fitment. These fitting instructions are to be used as a guide and in conjunction with workshop manual.

It is recommended that:

- all work to be carried out by a licensed technician;
- all safety precautions adhered to;
- wheel alignment to be checked and adjusted as required after any suspension work.
- All fasteners must be tensioned to manufacturer's torque settings.



### Fitting Instructions:

1. Remove the original bush and clean away any dirt and corrosion, whilst also filing away any sharp edges.
2. Slot the Polyurethane Bushes into each end of the arm, so the brims of the Polyurethane Bushes sit flush with the outside surface of the arm.
3. Apply some of the supplied grease to the outer surface of the Stainless Steel Sleeve, and insert it into the bore of the Polyurethane Bushes, until it sits flush inside the bore.
4. Place two of the Zinc Plated Mild Steel Washers on each Polyurethane Bush, and refit the arm, making sure to tension all hardware to the manufacturer's torque settings

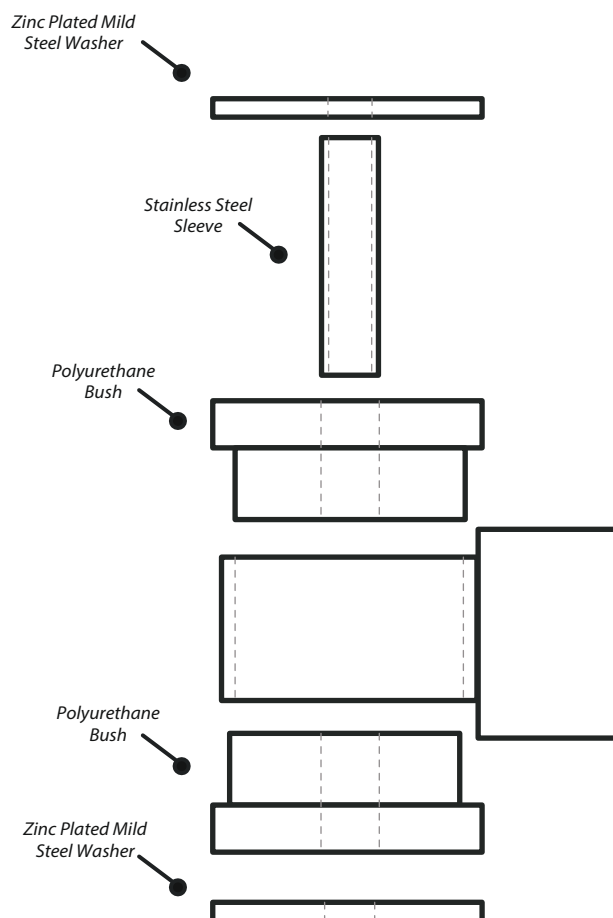


Figure 1