

# POWERFLEX®

## PART NUMBER

# PFR1-1012

## DESCRIPTION

## REAR UPPER ARM OUTER BUSH

### INSTALLATION GUIDE

#### Contents (parts per pack):

- 4 x Polyurethane Bushes
- 1 x PTFE/Silicone Grease
- 2 x Zinc Plated Steel Outer Shells
- 2 x Stainless Steel Sleeves
- 4 x Zinc Plated Steel Washers

Please read the complete fitting instructions and check package components before fitment. These fitting instructions are to be used as a guide and in conjunction with workshop manual.

It is recommended that:

- all work to be carried out by a licensed technician;
- all safety precautions adhered to;
- wheel alignment to be checked and adjusted as required after any suspension work.
- All fasteners must be tensioned to manufacturer's torque settings.



#### Fitting Instructions:

1. Remove the original inner bush from the arm.
2. Clean any dirt and corrosion from the bore of the arm and file off any sharp edges.
3. Push the outer shell into the arm with the larger diameter fitting towards the outside of the car until the lip sits against the arm, as shown in Figure 1.
4. Push the polyurethane bushes into the metal outer shell.
5. Apply the supplied grease into the bore of the polyurethane bushes and insert the stainless steel sleeve into the bore of the bush.
6. Re-fit the arm back to the car and tension all hardware to manufacturers recommended torque settings.

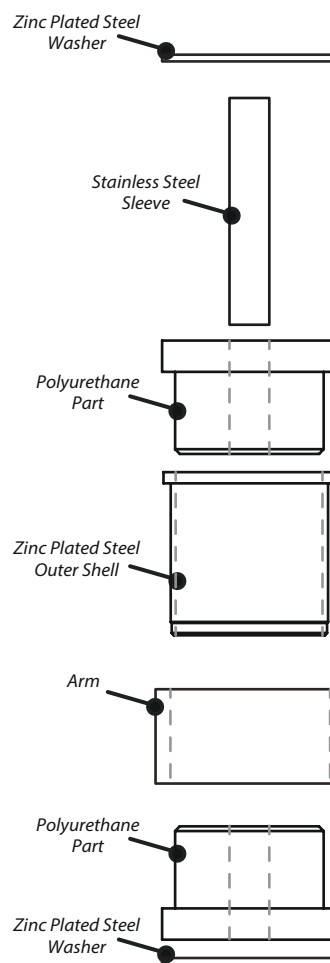


Figure 1