

# POWERFLEX®

## PART NUMBER

# PFF85-413

## DESCRIPTION

## FRONT ANTI ROLL BAR LINK

## INSTALLATION GUIDE

### Contents (parts per pack):

8 x Polyurethane Bushes      1 x PTFE/Silicone Grease  
4 x Stainless Steel Sleeves      4 x Mild Steel Washers

Please read the complete fitting instructions and check package components before fitment. These fitting instructions are to be used as a guide and in conjunction with workshop manual.

It is recommended that:

- all work to be carried out by a licensed technician;
- all safety precautions adhered to;
- wheel alignment to be checked and adjusted as required after any suspension work.
- All fasteners must be tensioned to manufacturer's torque settings.

### Fitting Instructions:

1. Remove the original rubber bushes from the anti roll bar link arm. Retain the original bolts for use with the polyurethane bushes.
2. Clean any dirt and corrosion from the bore of the arm, and file off any sharp edges.
3. Push the polyurethane part, smaller diameter first, into the bore of the arm until the top hat section sits on the arm.
4. Push a second polyurethane part into the bore of the arm from the opposite side, until the top hat section sits on the arm.
5. Apply some of the supplied grease to the bore of the polyurethane parts and push in the stainless steel sleeve until it sits flush.
6. Place a steel washer on the exposed end, the other surface should sit against the anti roll bar, and use the original bolt to secure the washer.
7. Tension all hardware to manufacturers recommended torque settings.

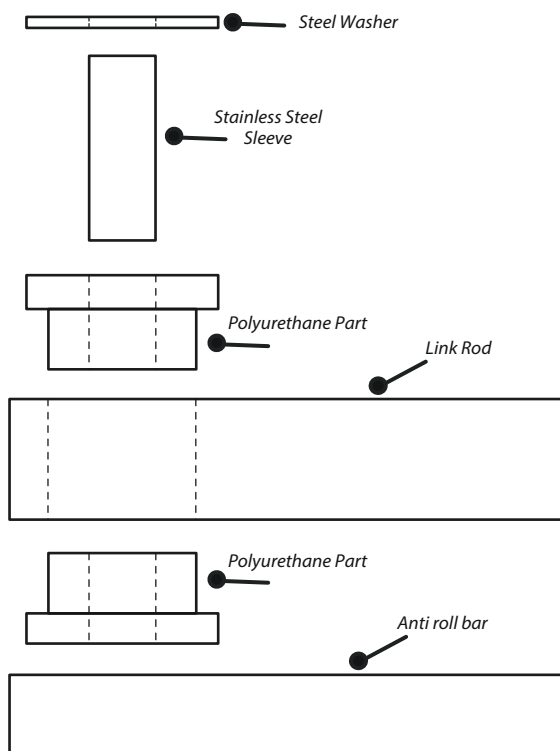


Figure 1