

POWERFLEX®

PART NUMBER

PFF85-244

DESCRIPTION

REAR LOWER ENGINE MOUNT BUSH

INSTALLATION GUIDE

Contents (parts per pack):

- 2 x Yellow Polyurethane 'A' Bushes
- 2 x Black Polyurethane 'B' Bushes
- 1 x Stainless Steel Sleeve
- 1 x PTFE Grease Sachet

Please read the complete fitting instructions and check package components before fitment. These fitting instructions are to be used as a guide and in conjunction with workshop manual.

It is recommended that:

- all work to be carried out by a licensed technician;
- all safety precautions adhered to;
- wheel alignment to be checked and adjusted as required after any suspension work.
- All fasteners must be tensioned to manufacturer's torque settings.

Fitting Instructions

1. Remove the original rubber bush from the engine mount casing. A blow torch may be necessary to burn any excess rubber material from the mount.

Remove any dirt and corrosion from the bore of the engine mount, using a rounded file to remove any sharp edges from the vacant hole.

2. Push the 'A' part polyurethane bushes into each side of the engine mount, positioning the arrow facing upwards on each bush.

3. Apply some of the supplied grease to the bore of the bush and insert the stainless-steel sleeve.

4. To further increase stiffness and limit flexibility of the bush, insert the supplied 'B' part inserts into the voiding of each side of the bush.

5. Refit the engine mount to the vehicle and tension all hardware to the manufacturers recommended torque settings.

6. Road Test



Figure 1 - Fitting the 'A' part polyurethane bushes

Arrow on bush facing up.

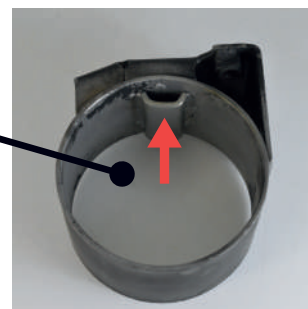
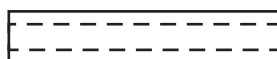


Figure 2 - Inserting the Stainless Steel Sleeve

Engine mount (with Yellow Polyurethane Bushes Fitted)



Stainless Steel Sleeve

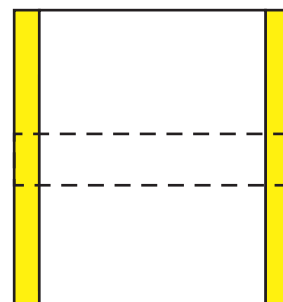


Figure 3 - Increasing stiffness using polyurethane part 'B'

