

POWERFLEX®

PART NUMBER

PFF76-801

DESCRIPTION

FRONT LOWER ARM FRONT BUSH

INSTALLATION GUIDE

Contents (parts per pack):

2 x Polyurethane A Bushes 1 x PTFE/Silicone Grease
2 x Polyurethane B Bushes 2 x Stainless Steel Sleeves
4 x Zinc Plated Mild Steel Washers

Please read the complete fitting instructions and check package components before fitment. These fitting instructions are to be used as a guide and in conjunction with workshop manual.

It is recommended that:

- all work to be carried out by a licensed technician;
- all safety precautions adhered to;
- wheel alignment to be checked and adjusted as required after any suspension work.
- All fasteners must be tensioned to manufacturer's torque settings.



Fitting Instructions:

1. Remove the arm from the car and then remove the existing rubber bush including the original outer shell that you will be replacing.
2. Make sure the bore, and any area the bush will have contact with, is cleaned of any debris, rust or sharp edges
3. Push the 2 Polyurethane bushes into the arm making sure that the B part is facing the inside of the arm
4. Apply the provided grease to the bore of the bush and push the stepped sleeve into the bush
5. Once the sleeve is pushed through the bush there will be a step on the sleeve created for the Mild steel washers to sit on when fitting
6. When fitting the arm back grease the end faces of the bushes before placing the mild steel washers on the sleeve and fitting back to the car
7. Tension all hardware to manufacturers recommended torque settings.

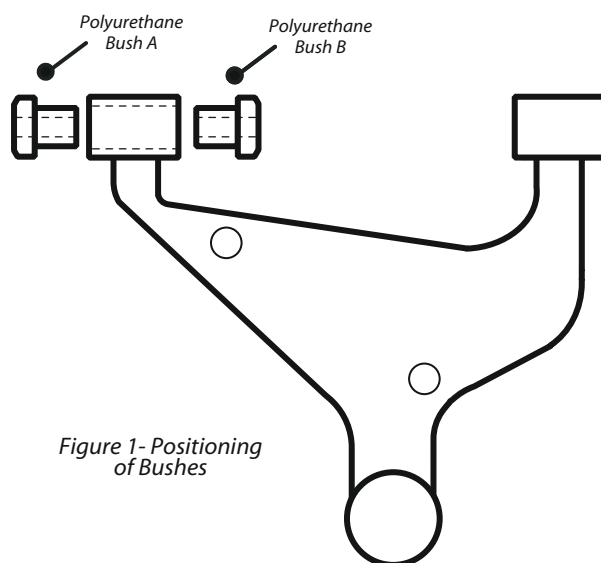


Figure 1 - Positioning of Bushes

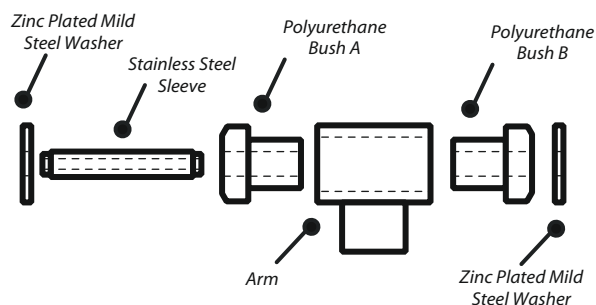


Figure 2 - Assembly