

POWERFLEX®

PART NUMBER

PFF50-5702

DESCRIPTION

FRONT WISHBONE FRONT BUSH

INSTALLATION GUIDE

Contents (parts per pack):

- 2 x Polyurethane Bushes
- 1 x Grease
- 2 x Stainless Steel Sleeves

Please read the complete fitting instructions and check package components before fitment. These fitting instructions are to be used as a guide and in conjunction with workshop manual.

It is recommended that:

- all work to be carried out by a licensed technician;
- all safety precautions adhered to;
- wheel alignment to be checked and adjusted as required after any suspension work.
- All fasteners must be tensioned to manufacturer's torque settings.

Fitting Instructions:

1. Remove front lower arm from car.
2. Remove the original rubber bush from arm including the original inner sleeve.
3. Clean any dirt and corrosion from the bore of the arm and the sub-frame, and file off any sharp edges.
4. On Figure 4 showing which one is the top and the bottom side. One of the faces is smaller then the other one.
5. Push the bush into the bore of the arm, with the taller top hat section first from the bottom side of the arm, as shown in Figure 3. **TIP: Apply some washing up liquid to the bore of the arm to aid in fitting.**
6. Apply some of the supplied grease to the bore of the bush and the stainless steel sleeve. Push the polyurethane bush onto the arm and push the sleeve in to the bore of the bush.
7. Tension all hardware to manufacturer's recommended torque settings.



Figure 1 - showing the contents of the box



Figure 2 - showing all polyurethane bushes fitted in to the arm.

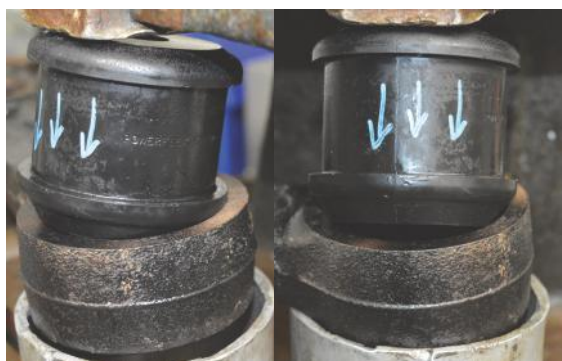


Figure 3 - showing how the bush fits into the arm.



Figure 4 - showing the top and the bottom side.

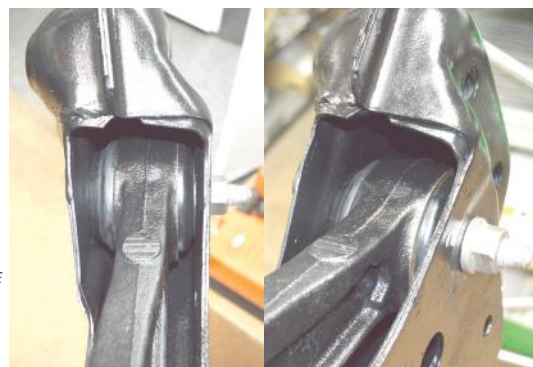


Figure 5 - showing the bush fitted on the sub-frame.