

# POWERFLEX®

## PART NUMBER

# PFF30-324

## DESCRIPTION

# ENGINE MOUNT REAR BUSH

## INSTALLATION GUIDE

### Contents (parts per pack):

- |                                      |                               |
|--------------------------------------|-------------------------------|
| 1 x Polyurethane A Bush              | 1 x PTFE/Silicone Grease      |
| 1 x Polyurethane B Bush              | 1 x Stainless Steel Sleeve    |
| 1 x Zinc Plated Steel Washer         | 1 x Zinc Plated Steel Bracket |
| 1 x Zinc Plated Steel Stepped Washer |                               |

Please read the complete fitting instructions and check package components before fitment. These fitting instructions are to be used as a guide and in conjunction with workshop manual.

It is recommended that:

- all work to be carried out by a licensed technician;
- all safety precautions adhered to;
- wheel alignment to be checked and adjusted as required after any suspension work.
- All fasteners must be tensioned to manufacturer's torque settings.



### Fitting Instructions:

1. Remove the original rubber bush from the engine mount.
2. Clean any dirt and corrosion from the bore of the mount and file off any sharp edges.
3. Push polyurethane part A in the upper position of the zinc plated steel bracket, where the body of part A is contained within the longer part of the metal outer shell on the steel plate.
4. Push polyurethane part B in the lower position of the steel bracket, where the body of part B is contained within the shorter part of the metal outer shell on the steel plate.
5. Apply some of the supplied grease into the bore of the polyurethane bush and push the stainless steel sleeve into the bore so that it sits flush.
6. Place the zinc plated stepped washer  
Tension all hardware to manufacturers recommended torque settings.

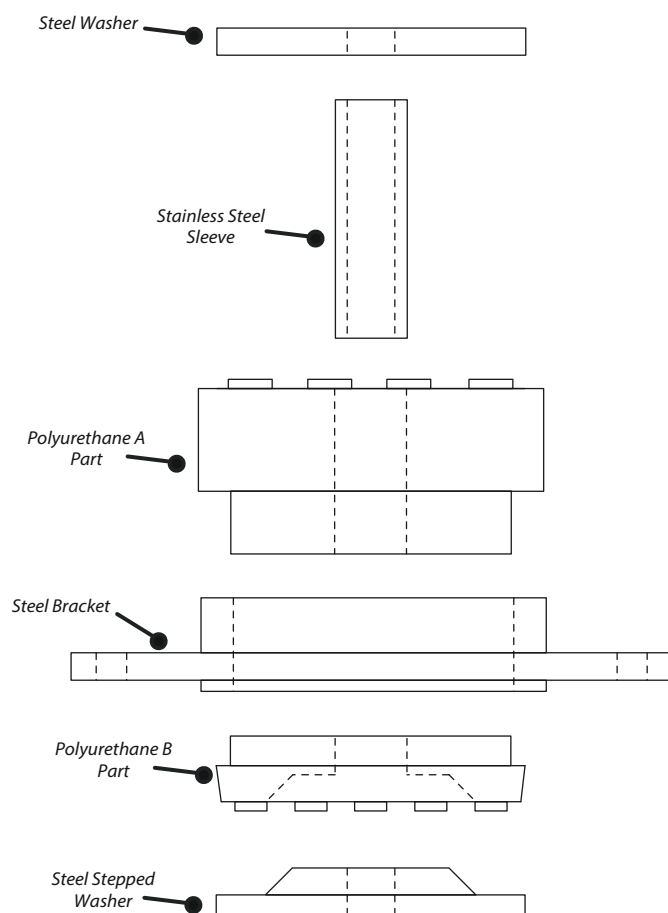


Figure 1