

POWERFLEX®

PART NUMBER

PFF3-902G

DESCRIPTION

FRONT WISHBONE REAR BUSH

INSTALLATION GUIDE

Contents (parts per pack):

2 x PFF3-902G

1 x Spanner

Please read the complete fitting instructions and check package components before fitment. These fitting instructions are to be used as a guide and in conjunction with workshop manual.

It is recommended that:

- all work to be carried out by a licensed technician;
- all safety precautions adhered to;
- wheel alignment to be checked and adjusted as required after any suspension work.
- All fasteners must be tensioned to manufacturer's torque settings.



Fitting Instructions:

1. Remove the original rubber bush from the rear of the front wishbone including its outer shell.

2. Clean any dirt and corrosion from the bore in the wishbone, using a rounded file to remove any burrs or sharp edges.

3. Push the new bush assembly into the wishbone with the flange sitting against the top face and the adjusting head of the bush facing upwards.

WARNING: Do not press on the centre sleeve/ball of the unit. Press on the metal outer shell to avoid damaging the bush as shown in Fig 1.

4. Use the supplied adjusting spanner to adjust the bush as desired.

Tip: For maximum caster, adjust the centre ball so that the offset sleeve is nearer to the inside of the car as shown in Fig 2.

5. Refit the wishbone to the vehicle and tension all hardware to the manufacturer's recommended torque settings.

6. Carry out a full 4-wheel geometry alignment to ensure everything is set correctly and evenly.

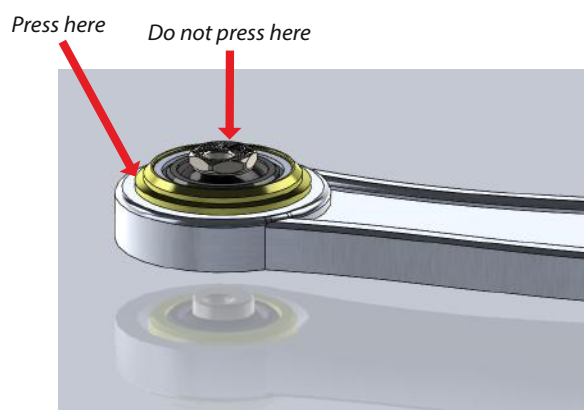


Figure 1 - showing the larger diameter on the upper face of the arm

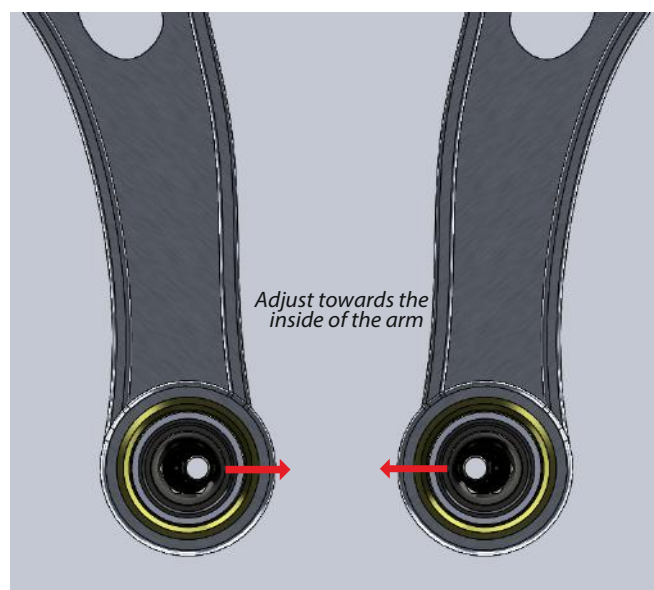


Figure 2 - showing the maximum caster adjustment