



PART NUMBER

**PFF3-120&121**

DESCRIPTION

**FRONT SUBFRAME FRONT BUSH**

**INSTALLATION GUIDE**

**Contents (parts per pack):**

- 2 x Polyurethane A bushes
- 2 x Polyurethane B bushes
- 2 x Stainless steel sleeves
- 2 x Mild steel washers
- 1 x PTFE/Silicone Grease

*Please read the complete fitting instructions and check package components before fitment. These fitting instructions are to be used as a guide and in conjunction with workshop manual.*

*It is recommended that:*

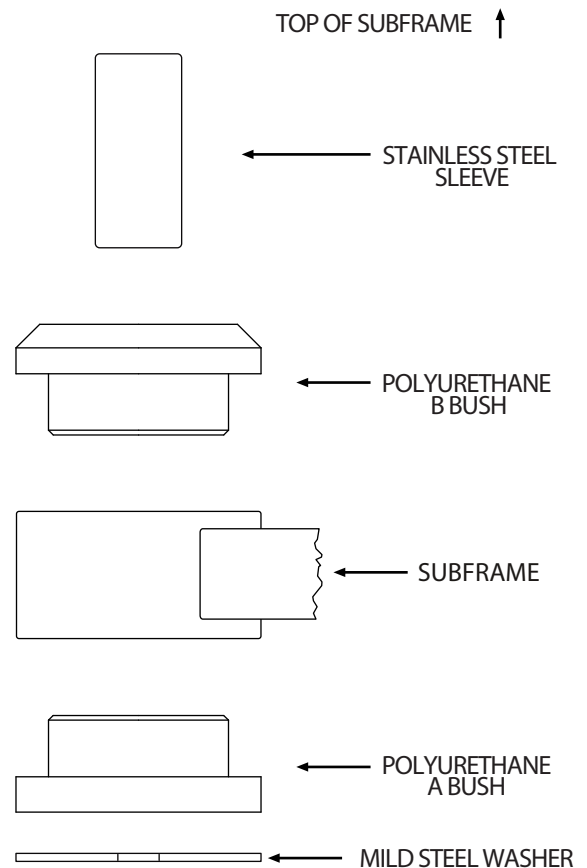
- all work to be carried out by a licensed technician;*
- all safety precautions adhered to;*
- wheel alignment to be checked and adjusted as required after any suspension work.*

*All fasteners must be tensioned to manufacturer's torque settings.*



**Fitting Instructions:**

1. Support rear subframe. Loosen bolts on subframe. Remove front mount bolts completely to lower subframe to gain access.
2. Remove original bush from subframe bore.
3. Clean any dirt and corrosion from the bore, making sure to remove any sharp edges from the bore.
4. Fit polyurethane A bush into bottom side of the subframe bore. As shown in *Figure 1*.
5. Fit polyurethane B bush into top side of the subframe bore. As shown in *Figure 1*
6. Apply some supplied grease into bore of the bush.
7. Fit stainless steel sleeve into bush.
8. Re-fit subframe to the car using new bolts, as the originals are stretch bolts and they are one time only use. Tension all hardware to manufacturers recommended torque settings.



*Figure 1: Assembly exploded view*