

POWERFLEX®

PART NUMBER

PFF27-702

DESCRIPTION

FRONT LOWER TRACK CONTROL ARM INNER BUSH

INSTALLATION GUIDE

Contents (parts per pack):

- | | |
|-----------------------------|--------------------------|
| 2 x Polyurethane Bushes | 1 x PTFE/Silicone Grease |
| 2 x Stainless Steel Sleeves | 4 x Mild Steel Washers |
| 2 x Outer Shells | |

Please read the complete fitting instructions and check package components before fitment. These fitting instructions are to be used as a guide and in conjunction with workshop manual. It is recommended that:

- all work to be carried out by a licensed technician;
- all safety precautions adhered to;
- wheel alignment to be checked and adjusted as required after any suspension work.
- All fasteners must be tensioned to manufacturer's torque settings.



Fitting Instructions:

1. Remove the original bush including its outer shell from the arm.
2. Clean any dirt or burrs from the bore in the arm. Remove any sharp edges with a rounded file.
3. Press the aluminium outer shells into each side of the arm, until sitting flush to the face of the arm. Try to use something that will avoid scratching the anodising of the shell.
4. Apply some washing up liquid to the bore of the shells and press the polyurethane bush in until fully through the arm.

Tip: If you are having trouble pressing the bush in, try pressing the bush in at a slight angle so that one part of the lip is already in the bore of the shell, and when steady pressure is applied, the rest of the lip should follow.

5. Apply the provided grease to the bore and the mounting faces of each bush.
6. Fit the Stainless Steel sleeve into the bushes.
7. Tension all hardware to manufacturers recommended torque settings.

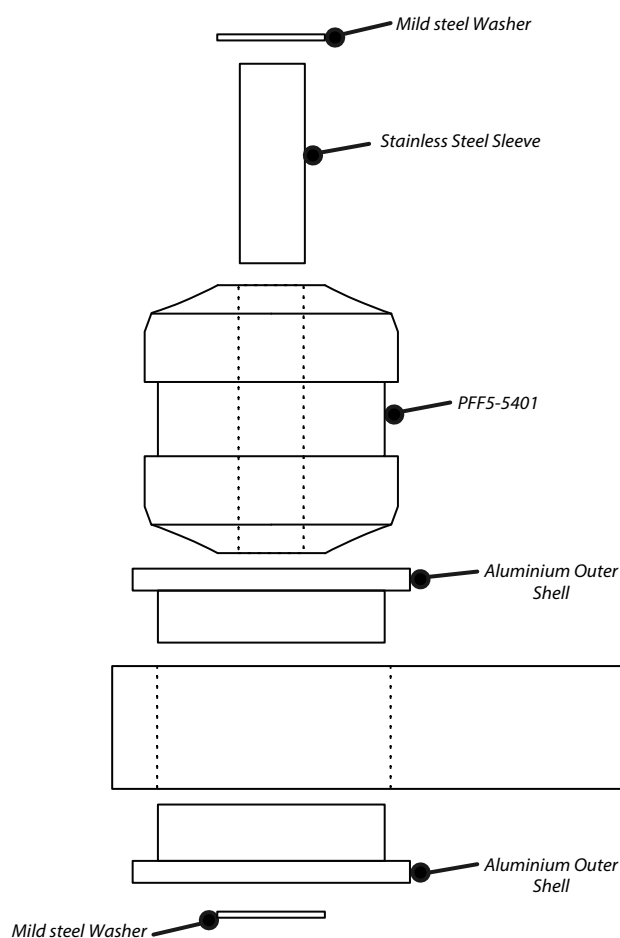


Figure 1