

# POWERFLEX®

PART NUMBER

**PFF19-1002G**

DESCRIPTION

FRONT WISHBONE REAR BUSH ANTI-LIFT & CASTER OFFSET

## INSTALLATION GUIDE

### Contents (parts per pack):

- 2 x Anodised Aluminium Brackets fitted with Polyurethane Bushes
- 2 x Stainless Steel Washers    2 x Stainless Steel Sleeves
- 4 x M12 Nylock Nuts    4 x M12 Bolts
- 2 x PTFE Silicone Grease

Please read the complete fitting instructions and check package components before fitment. These fitting instructions are to be used as a guide and in conjunction with workshop manual.

It is recommended that:

- all work to be carried out by a licensed technician;
- all safety precautions adhered to;
- wheel alignment to be checked and adjusted as required after any suspension work.
- All fasteners must be tensioned to manufacturer's torque settings.

### Fitting Instructions:

1. Remove the wishbone from the vehicle and remove the original rear bush and mounting bracket. This will involve pressing/cutting the bush off of the pin at the rear of the wishbone.

2. Clean any dirt and corrosion from the end of the wishbone ensuring the bare pin is perfectly smooth.

3. Press the flanged stainless steel sleeve onto the arm until the flange of the sleeve sits flush with the arm. Slide the machined washer over the sleeve until it mates against the sleeve as shown in Fig 1/2.

4. Apply the supplied PTFE/Silicone grease to the bore of the bush and present the bush/bracket to the end of the wishbone as shown in Fig 3. The shaped end of the bush will sit up against the machined washer. Apply some grease between these two surfaces.

**Note: The brackets are handed left and right and should only be fitted onto the car in the orientation shown in Fig 4.**

5. Re-fit the wishbone with the bracket to the vehicle, and tension all hardware to the manufacturer's recommended torque settings.

**Note: The anti-roll bar bush and bracket sit against the top face of the wishbone bracket and bush assembly**

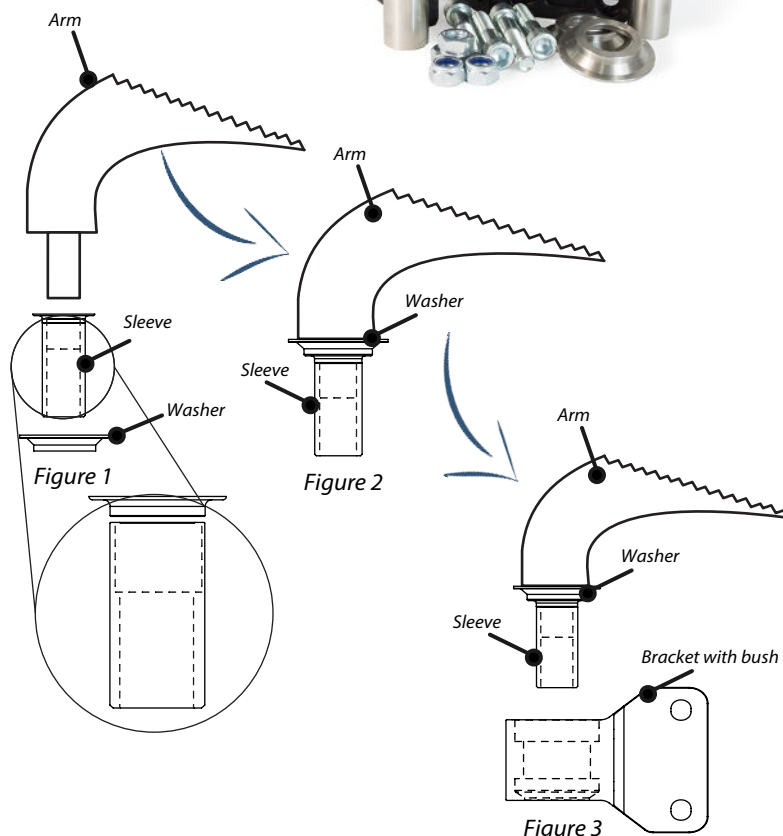


Figure 4 - Right-hand and left-hand bush and bracket assembly